

All-purpose limit switch – series CSA-xxx

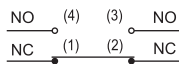
3 YEAR WARRANTY

The all-purpose limit switches are devices used in automatic systems as a control element. They are used for setting of gearing limits. They are mounted on transport lines, conveyors and other linear progressive motion machines. They feature a vibration-resistant metal shell.

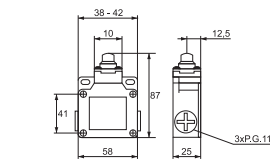
Product conformity documentation:

- Standard: EN 60947-1; EN 60947-5-1
- Dielectric strength: 1000V AC
- Insulating resistance: 100mΩ
- Electrical endurance (number of cycles): 500 000 with active load
- Mechanical endurance (number of cycles): 1 000 000
- Gearing speed: 5mm/s to 0.5 m/s
- Rated voltage: 230V
- Rated current: up to 10A
- IP code: IP66
- Cable input: cable gland PG11
- Section of power supply conductor: up to 2mm²
- Fastening strength of terminals: 6-8kgf/cm

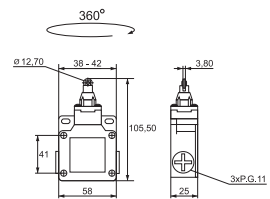
Type of contact system



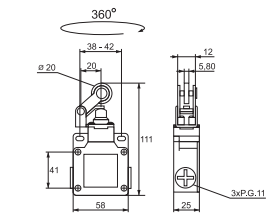
Type	Type of the head	Power of starting (g)	Power of release (g)	Switching position	General movement	Rated current	Packing/Box (pcs)	Catalogue number
------	------------------	-----------------------	----------------------	--------------------	------------------	---------------	-------------------	------------------



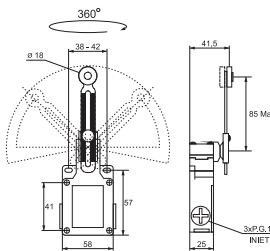
CSA - 001	metal cylinder	800	400	2.0mm	5.8mm	10A-active 4A-inductive	10 / 90	46A001
-----------	----------------	-----	-----	-------	-------	----------------------------	---------	--------



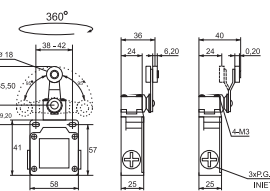
CSA - 003	cylinder with metal roll	800	400	2.0mm	5.8mm	10A-active 4A-inductive	10 / 90	46A003
-----------	--------------------------	-----	-----	-------	-------	----------------------------	---------	--------



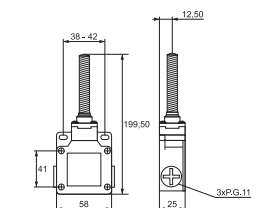
CSA - 012	horizontal lever with metal roll	800	400	2.0mm	5.8mm	10A-active 4A-inductive	10 / 90	46A012
-----------	----------------------------------	-----	-----	-------	-------	----------------------------	---------	--------



CSA - 031	adjustable lever with metal roll	400	100	22.5°	95°	10A-active 4A-inductive	10 / 80	46A031
-----------	----------------------------------	-----	-----	-------	-----	----------------------------	---------	--------



CSA - 021	lever with metal roll	400	100	22.5°	95°	10A-active 4A-inductive	10 / 80	46A021
-----------	-----------------------	-----	-----	-------	-----	----------------------------	---------	--------



CSA - 081	spring lever	150	50	22.5°	50mm	10A-active 4A-inductive	10 / 80	46A081
-----------	--------------	-----	----	-------	------	----------------------------	---------	--------